

Classic RN 120

DATA SHEET

Description

The HEINZMANN Classic bicycle drive is characterised by the tried-and-tested robust technology, combined with the innovative components and their optimised properties.

The DC motor provides a consistent, powerful performance at economical use of the battery power. The integrated gears result in strong torque, providing maximal support to the rider, even at steep inclines or with heavy loads. All mechanical parts are well protected by the sealed housing. The power electronics is not integrated into the motor, allowing even greater performance since the motor temperature does not impact the function of the electronics. For safety, a temperature safety switch is integrated in the motor.



Features

Powerful, proven DC drive

Gears for maximum torque

Front wheel or rear wheel assembly possible

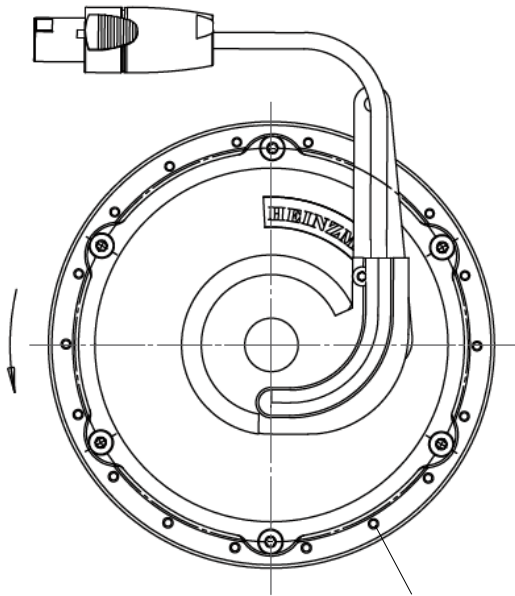
Separate power electronics not impacted by motor temperature, delivering greater performance

Technical data

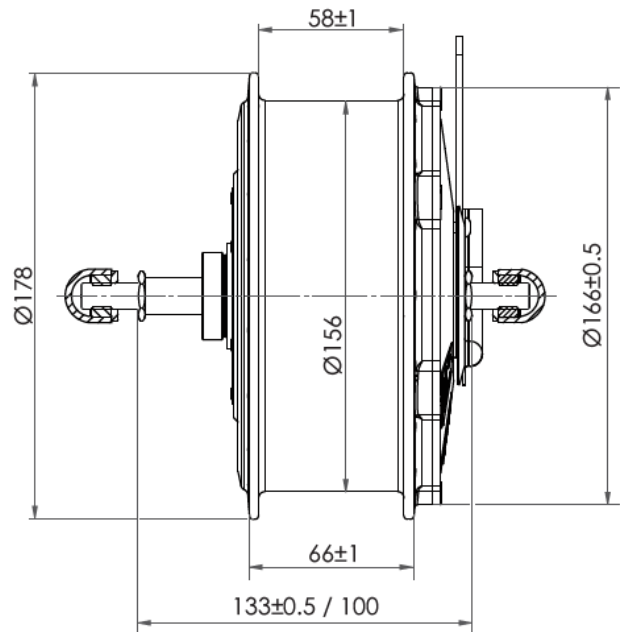
Wheel size	26"	28"
Motor		
Rated power	250 W	
Nominal speed	209 1/min	180 1/min
Cooling ext. ventilation	> 5 m/s	
Moment of inertia	900 kg·cm ²	
Weight	3.5 kg	
Electrical data		
Nominal voltage	36 VDC	
Degree of protection	IP54	
EMF constant	16.7 V/100min ⁻¹	19.2 V/100min ⁻¹
Torque constant	1.59 Nm/A	1.83 Nm/A
Armature resistance	0.250 Ω	0.275 Ω
Armature inductance	0.06 mH	0.07 mH

Wheel size	26"	28"
Sensor system		
Temperature sensor	Temperature switch 145 °C	
Operating points		
Operational mode	S1	
Rated torque	11.4 Nm	13.2 Nm
Rated current	9.5 A	8.7 A

Dimensions



18 × Ø2.9 mm, 20°,
bolt circle Ø164 mm,
opposite side shifted by 10°



Subject to alterations. ©HEINZMANN GmbH & Co. KG, 2019



Heinzmann GmbH & Co. KG
Am Haselbach 1
D-79677 Schönau/Germany

Phone: +49 7673 8208 - 0
Fax: +49 7673 8208 - 799
Email: info@heinzmann.de